



RS Contour Series

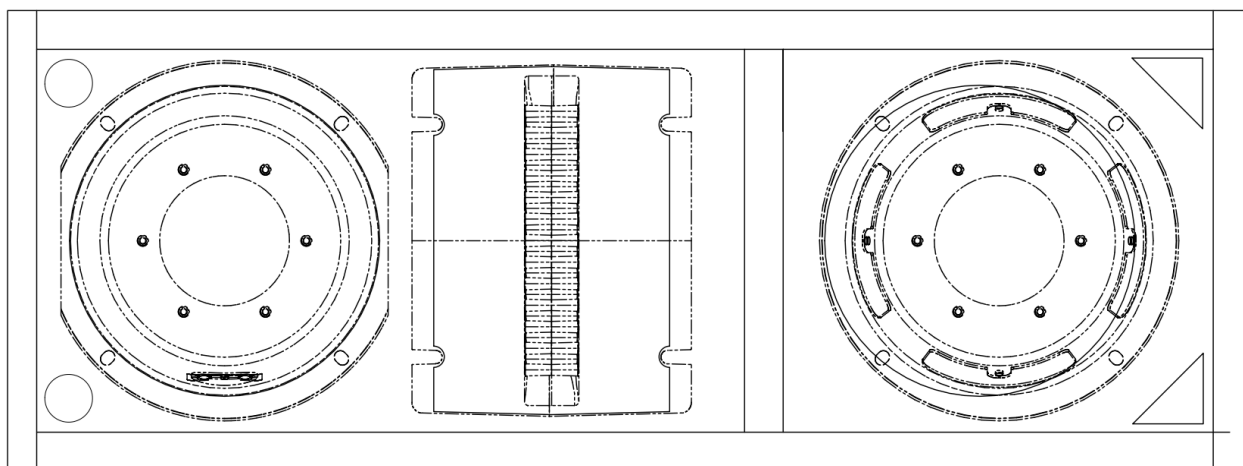
The RS Speakers *Contour* joins the MPT Line Array Series offering the same high output and high headroom clients have come to love about our MPT 12 and MPT 6.5 models. *Contour* models are handmade from the finest materials and components at our Colona, IL facility. Each pair being fully bespoke to meet our individual clients needs.

Up to 10 array sections per cabinet with optional side firing mid-bass elements.

Color matched paint and customized hanging hardware allow *Contour* cabinets to blend in to their deployment or stand out, adding to the architecture of the space.

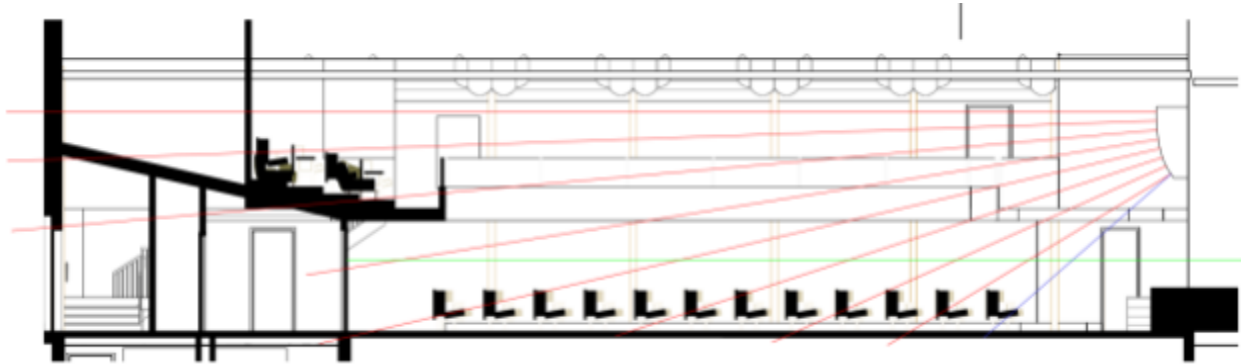


Contour 5 deployed in Wilton, IA





Bespoke Sound For ANY Environment



Contour cabinets are handcrafted to the exact needs of the installation location. Full dimensioning of the spaces are taken via 3D scanning to generate a highly accurate computer model for dispersion and shading calculations. Each array section splay angle is then determined within CAD and full size mockups to ensure the most even projection of sound across the listening audience. After construction, each pair of *Contour* cabinets are then run through a series of in house tests to develop a unique DSP profile.

Construction - 18mm Baltic Birch / Protective Duratex Coating

Dispersion - 120° wide

Flyware - HD Steel Interior Bracket

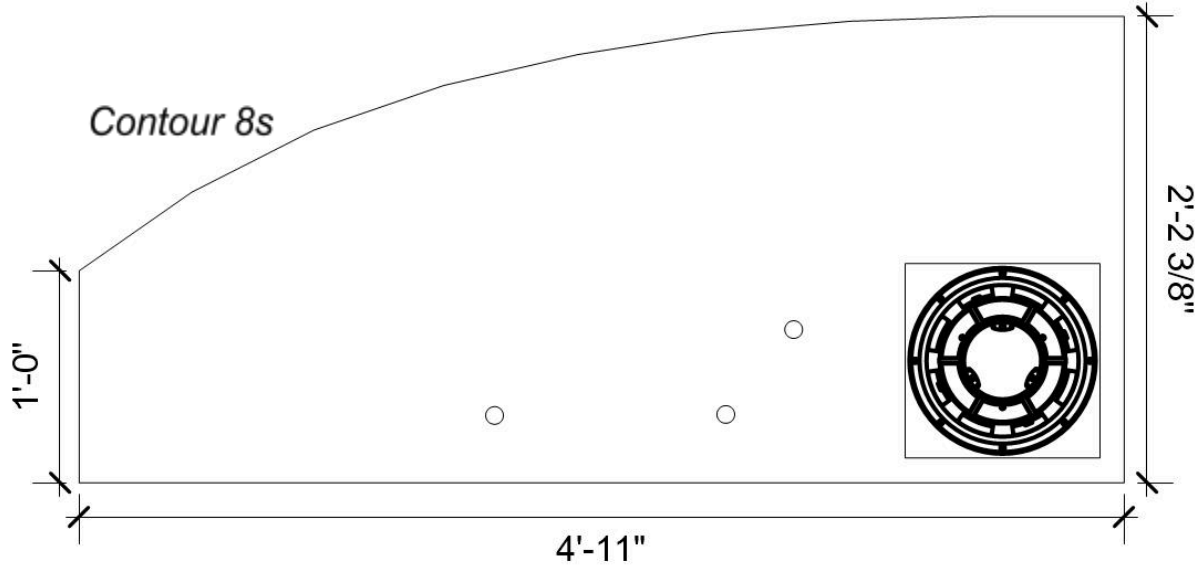
Each Segment Contains:

Lows - 6.5" driver

Mids - 6.5" driver

Highs - 1.4" exit driver on 120° x 15° waveguide

~ Optional Side Firing 10" Mid-bass Modules ~



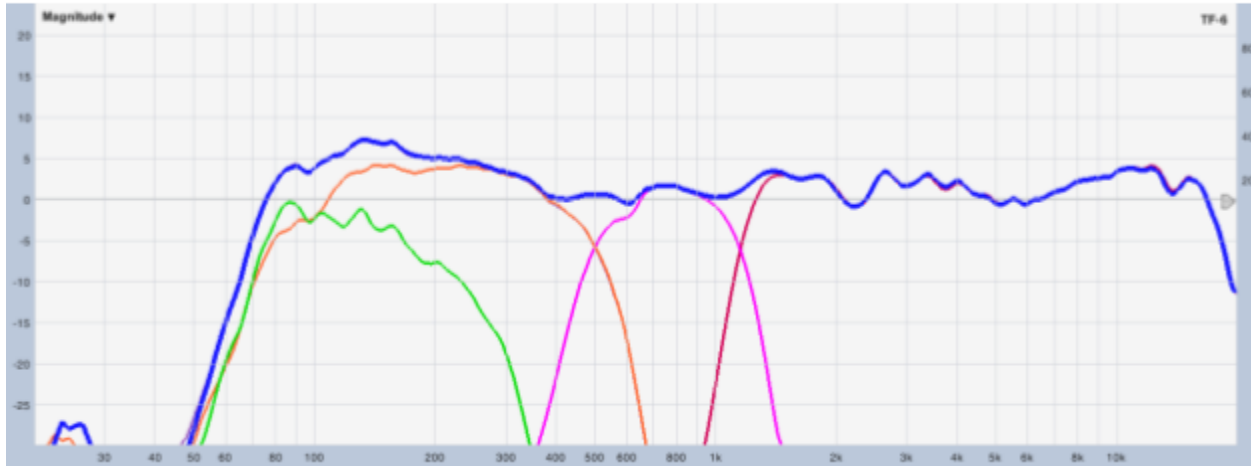
Contour 5

Contour 8s

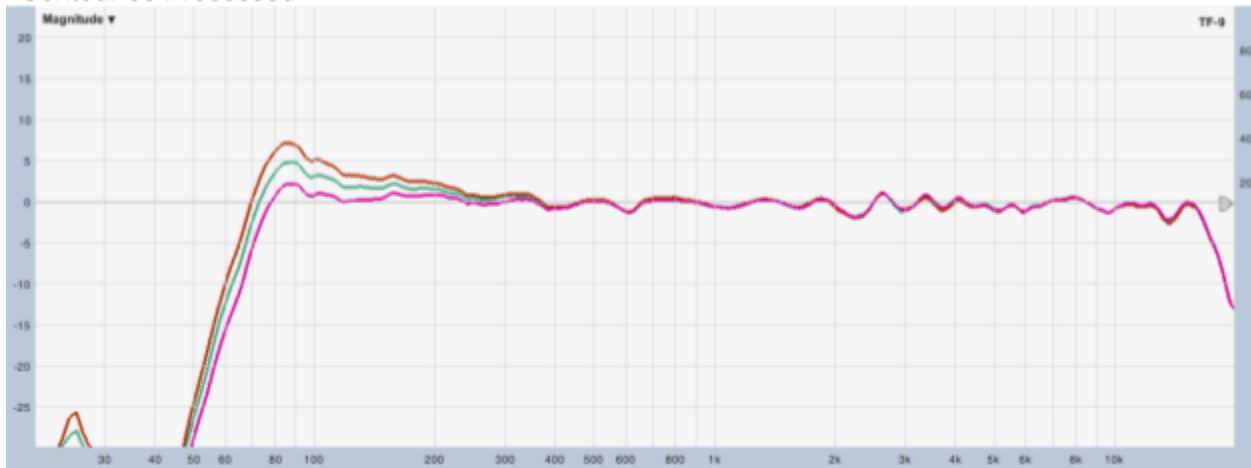
<p>5 24" x 36.5" x 16" 235 lbs 13 ply Baltic Birch – Steel - Aluminum 120° x 20° to 50° Configurable Configurable 5 6.5" drivers: 99 dB 2.83 V @ 1M 5 6.5" driver: 107 dB 2.83 V @ 1M 5 x 1.4" driver /waveguide 110 dB 2.83 V @ 1M 80Hz – 450Hz – 1,200Hz DSP settings provided Configurable Application based, more lines for more control 160 Watts per line (pair of wires) recommended 80 Watts Minimum</p>	<p>Array Sections 5 Dimensions 24" x 36.5" x 16" Weight 235 lbs Construction 13 ply Baltic Birch – Steel - Aluminum Dispersion 120° x 20° to 50° Flyware Configurable Cardioid Lows Configurable Lows 5 6.5" drivers: 99 dB 2.83 V @ 1M Total Lows 5 6.5" driver: 107 dB 2.83 V @ 1M Mids 5 x 1.4" driver /waveguide 110 dB 2.83 V @ 1M Highs 80Hz – 450Hz – 1,200Hz Recommended X-Over DSP settings provided Connectivity Configurable & Application based, more lines for more control Power Requirements 160 Watts per line (pair of wires) recommended 80 Watts Minimum</p>	<p>8 24" x 59" x 26" 340 lbs Protective Duratex Coating – Waterproofing 120° x 20° to 75° HD Steel internal flyware 10:1 2 x 10" drivers: - side firing 96 dB 2.83 V @ 1M 8 x 6.5" drivers: 101 dB 2.83 V @ 1M 103 dB 2.83 V @ 1M 8 x 6.5" driver: 109 dB 2.83 V @ 1M 8 x 1.4" driver /waveguide 111 dB 2.83 V @ 1M 80Hz – 450Hz – 1,200Hz See graphs below Max 4 drivers per line 6 pairs for Low, 4 pairs for Mids, & 8 pairs for Highs recommended for fine tuning capabilities Total amplifier power 3,000 to 6,000 Watts recommended for clean headroom and dynamics</p>
---	--	---



Contour 8s Raw



Contour 8s Processed



Contour 8s - Phase Response

