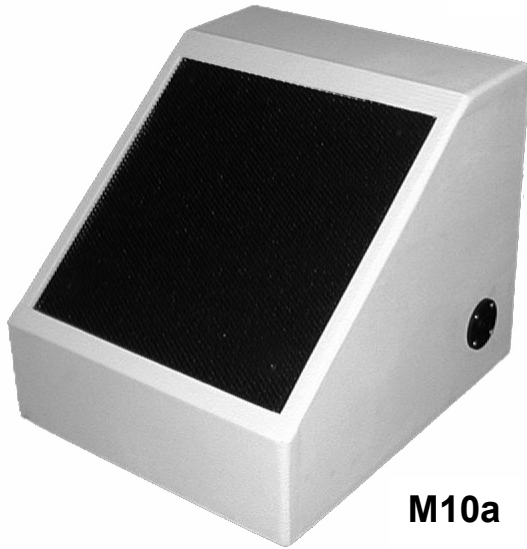


## M10a / C10a

Multi-Purpose Loudspeakers



M10a



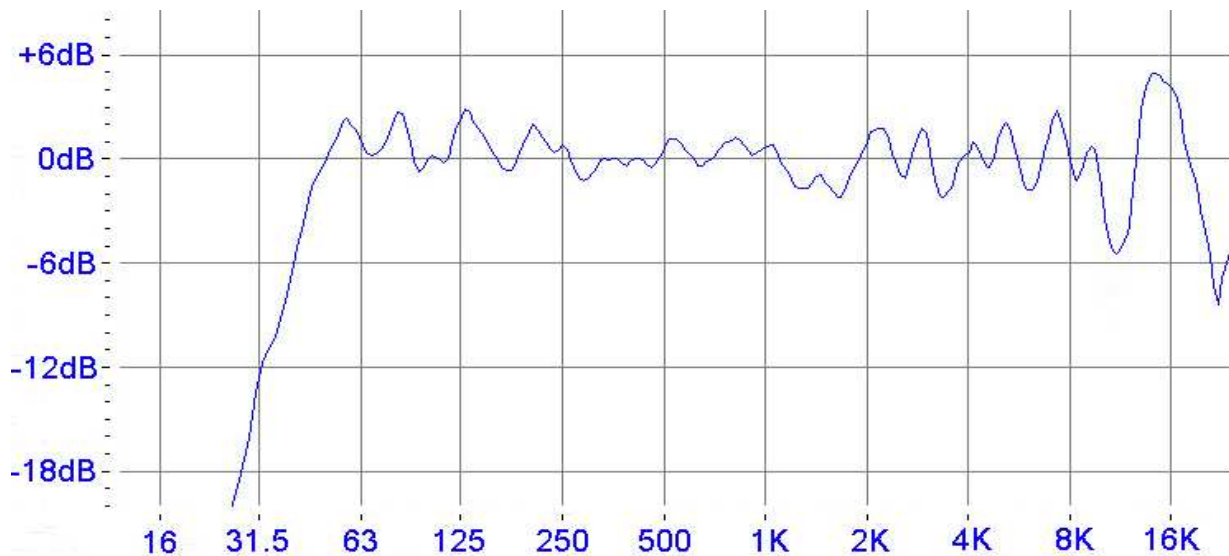
C10a

- **Two versions:** M10a stage monitor and C10a cube speaker
- **Proprietary 10" coaxial transducer**
- **Point source imaging**
- **1" B&C Italian high frequency driver**
- **Sealed cabinet:** providing deep smooth bass response
- **Tight conical dispersion pattern:**
  - good for long throws and reverberant environments
  - excellent clarity and imaging
- **High SPL output:** 121 dB long term (continuous); 127 dB maximum
- **High Fidelity / Low Distortion sound**
- **13 Ply Baltic Birch construction**
- **10 coat paint process or polyurethane coating**
- **Custom colors**
- **Ceiling mount bracket or fly points included (C10a)**
- **Optimized for digital signal processing and demanding duties**
- **\$625.00**





## Architects and engineers specifications



**Efficiency:** 99dB 1W/1m

**Power handling:** 250 Watts nominal

**Usable range:** 16Hz - 23Khz

Two C10a's will oscillate our showroom floor with 16Hz notes.

**Low-frequency:** Proprietary 10" with aluminum coaxial horn

**High-frequency:** 1" B&C compression driver

**Crossover:** 3.5Khz 18dB/oct. with high frequency protection

**SPL output:** 121dB continuous  
127dB peak

**Dispersion:** -6dB @ 75 degrees

**Input Jacks:** Dual NL4

**Hardware:**

**C10a** – 3 fly points or ceiling mount

**M10a** – 4 feet

**Weight:** 33 lbs

**Dimensions:**

**C10a** – (HWD) 11 <sup>7</sup>/<sub>8</sub>" x 13" x 15"

**M10a** – (HWD) 10 <sup>1</sup>/<sub>8</sub>" x 13" x 14 <sup>3</sup>/<sub>8</sub>"

The C10 and M10 series loudspeakers are for professional applications where demanding situations exist. The loudspeaker possesses characteristics inherent to loudspeakers costing many times more. These characteristics include an extra heavy duty crossover network, high-quality heavy-duty components, and excellent fidelity.

These loudspeakers are happy installed or on the road. The dispersion and frequency response make them perfect for critical applications while the SPL abilities give these speakers the power to overcome situations. 127dB is a lot of pure audio power produced by such a small and versatile product; have fun.

The construction technique is the same as all other Rexroat Sound products. 13 ply Baltic Birch, screws & glue, heavy duty grill (62% open area, 16 gauge), and a custom-specified heavy duty finish.

Every RS loudspeaker is backed by our trustworthy warranty program!



[www.rexroatsound.com](http://www.rexroatsound.com)

309.764.1663

309.236.7788

4810 2<sup>nd</sup> Avenue Moline, Illinois 61265